

[View this email in your browser](#)



Iowa Stalks
Monthly Newsletter - March 2021

This Month at ASHRAE Iowa

Join us for another virtual chapter meeting this month on Tuesday, March 16 at Noon! Lunch will be provided via GrubHub digital gift card to order from your favorite local restaurant. Cutoff for registration to receive the gift card is Monday March 15th at 5:00pm.

You are invited to a Zoom meeting.
When: Mar 16, 2021 12:00 PM Central Time (US and Canada)

Register in advance for this meeting:
<https://us02web.zoom.us/join/zoom/register/tZ0od-hrT0sGdJf5e5RZmjZAKCgOi458vLT>

After registering, you will receive a confirmation email containing information about joining the meeting.

The Region VI CRC this year will be a hybrid in person and virtual event from April 27 through May 1. See more information at the link below.

<https://www.newiashrae.org/crc-2021>

Mark your calendars for May 17 when we will be holding the annual Spring Fling Golf Outing at Des Moines Golf and Country Club.

President's Corner

Hey there, it looks like spring is trying it's best to arrive this month, let's hope the warmer weather continues.

This month's meeting will focus on hydronic balancing and take place over the lunch hour on March 16th. Attendees will get a gift card for lunch. We hope to see you there. On April 27th, we have Society President Chuck Gullede presenting his presidential theme on "Design-Build-Operate-Maintain. What could possibly go wrong?". Our most recent Chapter President, David Poetting, will present his chapter history project.

As vaccines begin their roll out, positivity and hospital rates drop, and our state opens up we have been thinking long and hard about when to get ASHRAE back to in-person meetings. I know I'm eager to get drink tickets in Zaug's hands and chat with members face to face. However, we have decided to follow society's lead and the recommendations of the CDC regarding gatherings and finish out the regular chapter meetings as virtual events this year. We looking forward to seeing everyone in person at the golf outing at Des Moines Golf and Country Club in May.

As we continue to look forward to a more normal future, be on the lookout for board member elections within the coming weeks. President-elect Tyson Scheidecker has been hard at work

ASHRAE Iowa Chapter
www.ashraeiowa.org

- Board of Governors -

Matt Jesson
Nick Terhall
Laura Russo
Jacob Larson

- Officers -

President
Adam Puls
President Elect
Tyson Scheidecker
Treasurer
Peter Ernzen
Secretary
Ted Gerber

- Committee Chairs -

Attendance
Dan Zaug
Auditing
Joe Moench
CTTC
Gary Thompson
Dan Blake
Communications
Committee
Jason Kems
Education
Kit Cartwright
Matt Gumm

board positions or potentially joining the board, please reach out to myself or Tyson. We'd love to help you get involved!

Thank you for information and continued support of the ASHRAE Iowa Chapter.

Adam Puls (adam.puls@isginc.com)
Iowa Chapter President 2020-2021

- [Historian](#)
- David Poetting
- [Honors & Awards](#)
- Brian Steffens
- [Membership](#)
- Luke Miller
- [Product Directory](#)
- Holly Elbert
- [Refrigeration](#)
- Justin Barrett
- [Research Promotion](#)
- Tjaden Ahrens
- Nick Seymour
- [Student Activities](#)
- Joe Nielsen
- Michael Seymour
- [TEGA](#)
- Mike Wolfe
- [YEA](#)
- Elli Cloyd
- Terrence Schafer
- [Golf Outing Committee](#)
- Jeff Hammer
- Nathan Edwards

Past Presidents

David Poetting 2019-2020	Verne Stewart 1976-1977
Brian Steffens 2018-2019	Curtis Hammer 1975-1976
Luke Miller 2017-2018	Ralph Schilling 1974-1975
Andrew Pospisal 2016-2017	Donald Bonicamp 1973-1974
Matt Gumm 2015-2016	Kent Mosher 1972-1973
Justin Barrett 2014-2015	Thomas Van Hon 1971-1972
Tim Conrad 2013-2014	Robert McBride 1970-1971
Matt Jesson 2012-2013	William Whitman 1969-1970
Kelly Crow 2011-2012	Einar Dahl 1968-1969
Holly Elbert 2010-2011	Eugene O'Neil 1967-1968
Roger Leshar 2009-2010	James Green 1966-1967
Kit Cartwright 2008-2009	Neil Hanson 1965-1966
Jerrold Sieverding 2007-2008	Bob Flanagan 1964-1965
Jason Kems 2006-2007	Lyndon Kelley 1963-1964
Chuck Heldenbrand 2005-2006	Elwood Giberson 1962-1963
Jeff Gross 2004-2005	Vern Polly 1961-1962
Ron Engelhardt 2003-2004	John Bain 1960-1961
Dan Zaug 2002-2003	Crom Campbell 1959-1960
Susan Oltrogge 2001-2002	R.T. Howard 1958-1959
Christopher Nelson 2000-2001	W.A. Schworm 1957-1958
Donald Swanson 1999-2000	D.E. Schroeder 1956-1957
Edward Truslow 1998-1999	G.J. Kraai 1955-1956
James Hall 1997-1998	W.E. Nanes 1954-1955
Robbin Vannoy 1996-1997	J.F. Sandfort 1953-1954
Mark Conway 1995-1996	R.H. Schnell 1952-1953
Paul Melton 1994-1995	C.H. McGuiness 1951-1952
Gregory Maxwell 1993-1994	R.S. Stover 1950-1951
Jeffery Hammer 1992-1993	D.E. Wells 1949-1950
Jack Culp 1991-1992	D.C. Murphy 1948-1949
James Lee 1990-1991	C.A. Wheele 1947-1948
Clint Leonard 1989-1990	E.O. Olson 1946-1947
Charles Pedersen 1988-1989	B.E. Landes 1945-1946
Gary Reynolds 1987-1988	W.W. Stuart 1944-1945
Dennis Hogan 1986-1987	C.W. Helstrom 1943-1944
Eugene Zefron 1985-1986	P.E. Triggs 1942-1943
Donald Hagge 1984-1985	Perry LaRue 1941-1942
Robert Rist 1983-1984	R.A. Norman 1940-1941
Joseph Proctor 1982-1983	Tracy Johnson 1939-1940
Mark Allen 1981-1982	W.R. White 1938-1939
Curtis Klaassen 1980-1981	
Gerald Anderson 1979-1980	
C.W. Miller 1978-1979	
Richard South 1977-1978	

Upcoming Meetings

Mark your calendars! The chapter is working hard to put on a great set of events this year and we hope to see you there.

Iowa Chapter Future Meetings				
Month	Date	Location	Topic	

October	22	Jethros - Ames, IA	Student Night + Women in Industry Panel
December	1	Virtual	Super Tech with Mick Schwedler
December	17	Virtual - 4pm	Happy Hour with MP and RP
January	20	Virtual - Noon	Air Side Testing and Balancing
February	23	Virtual with MN Chapter	Refrigeration
March	16	Virtual	Hydronic Balancing
April	27	At Your Computer	Webinar
April	TBD	Des Moines Area TBD	Bowling + History Project
May	17	Des Moines Golf and Country Club	Spring Fling Golf Outing

Society & Region Events

Month	Date	Location	Topic
October 2020	25-27	Peoria, IL - Virtual	2020 Region VI CRC
February 2021	9-11	Virtual	2021 Winter Conference
April-May 2021	29-1	Green Bay, WI and Virtual Option	2021 Region VI CRC

What's New in the Iowa Chapter?

Special Recognition for ASHRAE Iowa member Corey Metzger

See link below to ASHRAE News publication and announcement of Distinguished Service Award for Corey Metzger. Congratulations on the honor and thank you for you service!

<https://www.ashrae.org/about/news/2021/ashrae-recognizes-members-for-outstanding-industry-accomplishments>

GAC UPDATES!

Government funding and coronavirus relief legislative package

Several provisions of interest to ASHRAE members were Included as part of the recently passed government funding and coronavirus relief package. This includes \$82 billion in Covid relief funding for schools that can be used for building system inspections, maintenance, repair, and upgrades projects to improve IAQ. In addition, the legislation makes permanent 179D tax deduction for energy efficient buildings. The legislation also includes HFC phasedown authority to the EPA, increases the DOE budget, and provides EnergyStar funding.

This is an enormous piece of legislation that staff is still reviewing and will provide further details on.

Iowa Legislative Session

The Iowa legislative sessions kicks off January 11, 2021. As a result of Covid, we will not be doing the Design Professionals Day on the Hill this year. We will continue to monitor legislation, socially distanced, and report back to the chapter.

State Board Positions

The state of Iowa has a number of boards that provide guidance and rulings on things that impact our profession. These boards include the boiler and pressure vessel board, examining boards, elevator safety, plumbing and mechanical, and several others. We encourage you to review and apply to available board positions at <https://talentbank.iowa.gov/>.

ASHRAE COVID-19 Resource Page

To view ASHRAE's COVID-19 resource page, click here:
<https://www.ashrae.org/technical-resources/resources>

2021 Product Directory Complete!

Thank you to all sales representatives for advertising. The directory is available in PDF format on our website [HERE](#). Printed copies were delivered by mail by the end of February to all ASHRAE Iowa members and non-members who ordered the directory. If you would like to order additional directories they are \$10. Please contact Holly Elbert to order. If there are any questions, or you did not receive your directory please contact Holly at

Consider ASHRAE eLearning

In light of coronavirus concerns and the impact the pandemic is having on travel, [ASHRAE eLearning](#), a 100% web-based training allowing you to learn at your own pace and when convenient, can be a valuable resource. Courses can be accessed anywhere, anytime, and from any computer with an internet connection. Courses contain interactive exercises that enable you to engage and retain what you have learned. [Learn more](#).

Offerings include these popular course packages:

- Fundamentals: HVAC Systems
- HVAC Control Systems
- System Essentials
- DDC Controls
- Electrical System Design
- Sustainability
- Standard 62.1: Ventilation for Acceptable Indoor Air Quality
- Standard 90.1: Energy Standard for Buildings
- Standard 189.1-2011 - High Performing Green Buildings
- Loads and Modeling

Recently Updated:

- Introduction to HVAC Design (1.5 PDHs)
- Refrigeration System Parameters and Key Performance Indicators (KPIs) (1.0 PDH)

Once enrolled, you have 12 months to complete your training.

Why ASHRAE eLearning?

- Convenient way to learn about new applications and standards
- Easy way to keep up with license and certification requirements
- Approved by AIA and GBCI
- Earn PDHs/CEUs
- Courses created by industry leaders in HVAC&R

For the complete eLearning catalog, please visit <https://elearning.ashrae.org/>.

Individuals can register online at <https://elearning.ashrae.org/> and immediately gain access. Companies can register employees by contacting elearning@ashrae.org or calling 678-500-3917.

[ASHRAE eLearning](#) is an approved Continuing Education provider for the American Institute of Architects (AIA), and a U.S. Green Building Council (USGBC) Education Partner. Continuing Education (CE) hours earned from ASHRAE eLearning may be applied toward maintenance of state-licensed professionals (architects and professional engineers) and LEED credentials.

Thank you,

ASHRAE eLearning

Research Promotion

Go to http://ashraerp.com to donate online. Please contribute all donations to the Endowed Research via ASHRAE Foundation.					
Individual Investors			Company Investors		
HR = Honor Roll participants \$150 min			HR = Honor Roll participants \$500 min		
Ronald A Engelhardt	HR	\$20,000	Miller Mechanical Specialties, Inc.		
Curtis J Klaassen	HR	\$19,500	Millennium Technology of Iowa		
Luke Miller	HR	\$19,000	Iowa ASHRAE Chapter		
Fred Miller	HR	\$18,500			
Adam Puls	HR	\$18,000			
TJaden Ahrens	HR	\$17,500			
Nick Seymour	HR	\$17,000			
Peter Erzen	HR	\$16,500			
Tyson Scheidecker	HR	\$16,000			
David Poetting	HR	\$15,500			
Ted Gerber	HR	\$15,000			
Matt Jesson		\$14,500			
Matt Gumm		\$14,000			
Richard Kapustka	HR	\$13,500			
Daniel Zaug	HR	\$13,000			
Paul Melton		\$12,500			
Jacob Larson		\$12,000			
James Lee	HR	\$11,500			
Chris Nelson	HR	\$11,000			
Don Stanek		\$10,500			
		\$10,000			
		\$9,500			
		\$9,000			
		\$8,500			
		\$8,000			
		\$7,500			
		\$7,000			
		\$6,500			
		\$6,000			
		\$5,500			
		\$5,000			
		\$4,500			
		\$4,000			
		\$3,500			
		\$3,000			
		\$2,500			
		\$2,000			
		\$1,500			
		\$1,000			
		\$500			
		\$0			

This year, the BOG is encouraging you to donate online in an effort to save paper and increase the efficiency of the RP donation process. Please visit the ASHRAE RP Donation page [here](#). ASHRAE provides options for you to determine where to place your donation. The Iowa Chapter is looking to increase its endowment and would appreciate it if you would place your donation in the box available next to "Endowed Research via ASHRAE Foundation", check the box indicated that you understand that those funds are restricted for the support of ASHRAE Research, and put "Iowa Chapter" in the "Existing Fund Name (If known):" box. From there it's as simple as any other online purchase with a credit card.

Don't forget that ASHRAE is a 501(c)(3) organization. Contributions are deductible as allowed by law. A receipt will be sent to the address listed above.

If you would still prefer to donate by check or have any further questions about the donation process, [please contact TJaden Ahrens](#).

Thank you for your donation!

ASHRAE Society News

Industry News

[Turbomachine Expander Offers Efficiency, Safety for Heating, Cooling](#)

Purdue University researchers developed a device to decrease energy consumption of the vapor-compression heat pump cycle, which is commonly used in homes, businesses and vehicles for cooling and heating. The team created a novel turbomachine expander that helps harvest previously wasted energy used in the process of moving the air from high to low pressure. The device can be used as a control agent within an existing heat pump. [Read more](#)

[Astronauts Replace Coolant Pumps on International Space Station](#)

Two astronauts spent more than six hours installing replacement coolant pumps during a spacewalk on Monday. The astronauts attached the 350-lb (159 kg) pump module to the 6.8 metric ton Alpha Magnetic Spectrometer (AMS), plugged in power and data cables and spliced together eight existing coolant lines. The AMS was not designed to be serviced in orbit, so connecting the coolant lines while working in pressurized spacesuits was especially challenging. [Read more](#)

[MIT Creates System that Cools Without Using Electricity](#)

A new system provides cooling with no electricity by using the process of radiative cooling. The device, which has no moving parts, uses an aerogel insulation that blocks and reflects visible rays of sunlight. The system can keep fruits and vegetables from spoiling and can help double the time the produce remains fresh in remote places where reliable power for refrigeration is not available. [Read more](#)

[Thermal Comfort Model Measures Body Shape With Sensors](#)

A team at Carnegie Mellon University has created the first model that combines environmental information with data on an individual's body shape to determine thermal comfort. Information is aggregated to find the temperature that the most occupants possible will find comfortable. The system estimates body shape information from depth-imaging sensors, which are less privacy-invasive than approaches such as cameras. [Read more](#)

[Water Battery Powers Air-Conditioning Systems](#)

A three-story "water battery" is producing enough energy to power a university's air-conditioning systems, which is reducing its reliance on the grid by more than 40%. The water battery is a thermal energy storage system that uses energy generated by a 2.1-megawatt photovoltaic system to cool 4.5 megaliters of water resting inside a three-story tank. The campus' air-conditioning systems use the cooled water. [Read more](#)

ASHRAE Learning Opportunities



ASHRAE offers 7 certification programs that demonstrates a design professional's knowledge and skills in a practice area. The certifications allow you to stand out to potential clients and enhance your reputation.

Certifications offered:

- Certified HVAC Designer (CHD)
- High-Performance Building Design Professional (HBDP)
- Building Energy Modeling Professional (BEMP)
- Building Commissioning Professional (BCxP)
- Healthcare Facility Design Professional (HFDP)
- Building Energy Assessment Professional (BEAP)
- Operations & Performance Management Professional (OPMP)

Learn more at: <https://www.ashrae.org/professional-development/ashrae-certification>

Newsletter Sponsors

Sponsoring our monthly newsletter is a great way to advertise your business and support your Iowa ASHRAE Chapter. Please consider sponsoring for the 2020-2021 society year. Renewing and new sponsors need to send in payment immediately for inclusion in next month's newsletter. Please make checks payable to: ASHRAE Iowa or see the link below. The cost is \$125. Get your sponsorship in to get your logo below!

https://ashraeiowa.org/?espresso_events=2020-21-newsletter-sponsorship

Send payment to:

Peter Erzen
ASHRAE Newsletter Sponsorship
P.O. Box 3686
Urbandale, IA 50323



BLUESTONE ENGINEERING



CORN STATES METAL FABRICATORS



HART - HAMMER, INC.

Phone (515) 277-6305
Fax (515) 277-3069
529 Elm St • PO Box 65517
West Des Moines, IA 50265
www.harthammer.com
info@harthammer.com








L.A. FULTON & SONS




20 YEARS OF INNOVATIVE HVAC SOLUTIONS

1454-30th Street, Suite 207
West Des Moines, IA 50266

Phone (515) 223-6048
Fax (515) 223-7269
info@milltechhvac.com

www.milltechhvac.com



RAYMON ENTERPRISES



Rist & Associates
MANUFACTURERS REPRESENTATIVES







Phone: (515) 243-8720
FAX: (515) 243-8714
www.ristandassociates.com

4 Washington Ave.
P.O. Box 1807
Des Moines, Iowa 50305



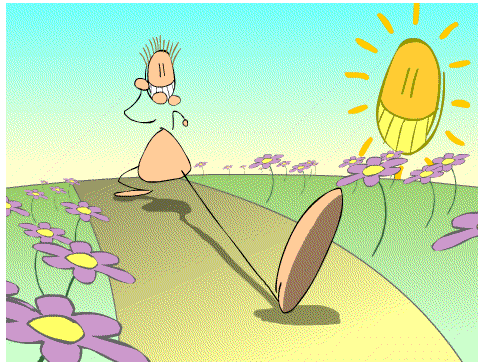
SME MECHANICAL



IOWA CHAPTER



Ted Gerber is collecting cards for the sponsors. If you've paid and don't see your card here or would like to revise the card shown, send a card-sized PNG or JPEG file to: tgerber@dptgroup.com.



Copyright © 2021 ASHRAE Iowa, All rights reserved.

Want to change how you receive these emails?
You can [update your preferences](#) or [unsubscribe from this list](#).

