

[View this email in your browser](#)



**Iowa Stalks**  
 Monthly Newsletter - December 2020

**This Month at ASHRAE Iowa**

**Join us for a virtual happy hour at 4:00PM on December 17 to catch up with your fellow associates and catch an update on chapter MP and RP progress this year. Link to the Zoom registration page is below.**

[https://us02web.zoom.us/join/join?source=ASHRAE+Iowa+Members&utm\\_campaign=9198d0f8aa-EMAIL\\_CAMPAIGN\\_2020\\_12\\_11\\_01\\_01&utm\\_medium=email&utm\\_term=0\\_b9b543e1a2-9198d0f8aa-14974755](https://us02web.zoom.us/join/join?source=ASHRAE+Iowa+Members&utm_campaign=9198d0f8aa-EMAIL_CAMPAIGN_2020_12_11_01_01&utm_medium=email&utm_term=0_b9b543e1a2-9198d0f8aa-14974755)

**We will continue to monitor the COVID-19 situation as we plan the January meeting. At this point it looks like it will be another virtual meeting but we will update you with more information in 2021. Have a great holiday season!**

**The virtual Annual Winter Conference planned for February 9-11 is planned and scheduled out. See the schedule and register at the link below.**

<https://www.ashrae.org/conferences/2021-virtual-winter-conference>

**President's Corner**

Happy Holidays Iowa Chapter! I hope this newsletter finds you and your family well.

Thank you to everyone who joined our November virtual technical meeting. It was great to see everyone and get a chance to interact during the ethics portion of the afternoon. We were thankful to have Mick Schwedler present on chilled water systems and ethics.

Unfortunately, this year we will not have our annual joint chapter meeting with the Construction Specification Institute (CSI) and Sheet Metal Contractors of Iowa (SMCI). Instead, we are hosting a Membership Promotion (MP) and Research Promotion (RP) virtual happy hour on December 16<sup>th</sup> at 4pm. I hope you'll join us to

**ASHRAE Iowa Chapter**

[www.ashraeiowa.org](http://www.ashraeiowa.org)

**- Board of Governors -**

Matt Jesson  
 Nick Terhall  
 Laura Russo  
 Jacob Larson

**- Officers -**

President  
 Adam Puls  
President Elect  
 Tyson Scheidecker  
Treasurer  
 Peter Erzen  
Secretary

We want to especially encourage all past Iowa Chapter presidents to join us at the December meeting for our annual past presidents' photo. This year that photo will likely end up a screenshot of the meeting attendees, but what better way to commemorate the shift from in-person to virtual events that has happened this year. We will also be honoring David Poetting for his dedication and services as the Iowa Chapter President last year.

Keep the night of January 20<sup>th</sup> open over lunch as we will have a virtual presentation on testing and balancing by Board of Governors' member Matt Jesson. Our test run of delivery service gift cards went well for the November meeting, so we will be doing that again for our attending members in January.

The 2021 ASHRAE Winter Conference is virtual. Visit the conference [website](#) for more information. The 2021 Region VI CRC is planned to be a hybrid event starting April 29<sup>th</sup>. At this time, all learning opportunities are planned to be available online, so it's another great chance to get some PDHs.

The members of the ASHRAE Board of Governors would like to extend well wishes to you and your families this holiday season and we look forward to continuing to serve you in 2021.

Adam Puls ([adam.puls@isginc.com](mailto:adam.puls@isginc.com))  
Iowa Chapter President 2020-2021

#### - Committee Chairs -

##### Attendance

Dan Zaug

##### Auditing

Joe Moench

##### CTTC

Gary Thompson

Dan Blake

##### Communications

##### Committee

Jason Kems

##### Education

Kit Cartwright

Matt Gumm

##### GAC

Matt Swenka

##### Historian

David Poetting

##### Honors & Awards

Brian Steffens

##### Membership

Luke Miller

##### Product Directory

Holly Elbert

##### Refrigeration

Justin Barrett

##### Research Promotion

Tjaden Ahrens

Nick Seymour

##### Student Activities

Joe Nielsen

Michael Seymour

##### TEGA

Mike Wolfe

##### YEA

Elli Cloyd

Terrence Schafer

##### Golf Outing Committee

Jeff Hammer

Nathan Edwards

## Past Presidents

David Poetting 2019-2020  
Brian Steffens 2018-2019  
Luke Miller 2017-2018  
Andrew Pospisal 2016-2017  
Matt Gumm 2015-2016  
Justin Barrett 2014-2015  
Tim Conrad 2013-2014  
Matt Jesson 2012-2013  
Kelly Crow 2011-2012  
Holly Elbert 2010-2011  
Roger Leshner 2009-2010  
Kit Cartwright 2008-2009  
Jerrod Sieverding 2007-2008  
Jason Kems 2006-2007  
Chuck Heldenbrand 2005-2006  
Jeff Gross 2004-2005  
Ron Engelhardt 2003-2004  
Dan Zaug 2002-2003

Verne Stewart 1976-1977  
Curtis Hammer 1975-1976  
Ralph Schilling 1974-1975  
Donald Bonicamp 1973-1974  
Kent Mosher 1972-1973  
Thomas Van Hon 1971-1972  
Robert McBride 1970-1971  
William Whitman 1969-1970  
Einar Dahl 1968-1969  
Eugene O'Neil 1967-1968  
James Green 1966-1967  
Neil Hanson 1965-1966  
Bob Flanagan 1964-1965  
Lyndon Kelley 1963-1964  
Elwood Giberson 1962-1963  
Vern Polly 1961-1962  
John Bain 1960-1961  
Crom Campbell 1959-1960

Donald Swanson 1999-2000  
 Edward Truslow 1998-1999  
 James Hall 1997-1998  
 Robbin Vannoy 1996-1997  
 Mark Conway 1995-1996  
 Paul Melton 1994-1995  
 Gregory Maxwell 1993-1994  
 Jeffery Hammer 1992-1993  
 Jack Culp 1991-1992  
 James Lee 1990-1991  
 Clint Leonard 1989-1990  
 Charles Pedersen 1988-1989  
 Gary Reynolds 1987-1988  
 Dennis Hogan 1986-1987  
 Eugene Zefron 1985-1986  
 Donald Hagge 1984-1985  
 Robert Rist 1983-1984  
 Joseph Proctor 1982-1983  
 Mark Allen 1981-1982  
 Curtis Klaassen 1980-1981  
 Gerald Anderson 1979-1980  
 C.W. Miller 1978-1979  
 Richard South 1977-1978

D.E. Schroeder 1956-1957  
 G.J. Kraai 1955-1956  
 W.E. Nanes 1954-1955  
 J.F. Sandfort 1953-1954  
 R.H. Schnell 1952-1953  
 C.H. McGuinness 1951-1952  
 R.S. Stover 1950-1951  
 D.E. Wells 1949-1950  
 D.C. Murphy 1948-1949  
 C.A. Wheele 1947-1948  
 E.O. Olson 1946-1947  
 B.E. Landes 1945-1946  
 W.W. Stuart 1944-1945  
 C.W. Helstrom 1943-1944  
 P.E. Triggs 1942-1943  
 Perry LaRue 1941-1942  
 R.A. Norman 1940-1941  
 Tracy Johnson 1939-1940  
 W.R. White 1938-1939

## Upcoming Meetings

Mark your calendars! The chapter is working hard to put on a great set of events this year and we hope to see you there.

### Iowa Chapter Future Meetings

Month	Date	Location	Topic
August	31	Briarwood Country Club Ankeny	Fall Frolic Golf Outing
October	22	Jethros - Ames, IA	Student Night + Women in Industry Panel
December	1	Virtual	Super Tech with Mick Schwedler
<b>December</b>	<b>17</b>	<b>Virtual - 4pm</b>	<b>Happy Hour with MP and RP</b>
January	20	Des Moines Area TBD	Air Side Testing and Balancing
February	17	Des Moines Area TBD	Refrigeration
March	16	Des Moines Area TBD	Hydronic Balancing with Luciano Belo
April	TBD	At Your Computer	Webinar
April	TBD	Des Moines Area TBD	Bowling + History Project
May	TBD	Des Moines Golf and Country Club	Spring Fling Golf Outing

### Society & Region Events

Month	Date	Location	Topic
October 2020	25-27	Peoria, IL - Virtual	2020 Region VI CRC
<b>February 2021</b>	<b>9-11</b>	<b>Virtual</b>	<b>2021 Winter Conference</b>
April-May 2021	29-1	Green Bay, WI and Virtual Option	2021 Region VI CRC

## What's New in the Iowa Chapter?

---

**LEED Training Discount for ASHRAE Members - If anyone is looking for LEED Certification, ASHRAE Iowa members have been offered a \$50 discount for a program through LeadingGreen training. Please reach out to [tgerber@dptgroup.com](mailto:tgerber@dptgroup.com) for more information.**

---

### **Food Bank Efforts & "Pack the Pantry"**

A joint effort with local industry, local government, Iowa State University Extension, and our chapter has helped over 100 grant applications secure nearly \$450,000 in funding for walk in coolers projects at local food pantries.

Applicants can receive up to \$10,000 to increase refrigeration capacity making more perishable, locally-grown foods available to their customers. A special thanks to Justin Barrett, Tim Conrad, and Jon Scanlan with HyVee for spearheading the efforts to assist with this program.

---

### **2020 History Project is Ready!**

Check out the latest history project that Brian Steffens put together. He helped organize and albumize all of our past photos into one location for viewing – our [website!](#)

If you want to find the page on your own, go to the Committee menu, History and Photo Album History. From there, click on any of the many albums created to view the photos.

Have some old ASHRAE related photos you want to share? Send them to Brian or get them to any one of the board members. We'll get them added to our archive and posted so everyone can enjoy them for years.

---

### **ASHRAE COVID-19 Resource Page**

---

To view ASHRAE's COVID-19 resource page, click here:

<https://www.ashrae.org/technical-resources/resources>

---

### **2021 Product Directories coming soon!**

---

Thank you to all sales representatives for advertising. Last years' directory is available in PDF format on our website ([Click Here](#)). Printed copies will be delivered by mail to all ASHRAE Iowa members and non-members who ordered the directory. If you would like to order additional directories they are \$10. Please contact Holly Elbert to order. Big thanks to Holly for doing this every year. Watch for your new directories coming soon!

---

### **Consider ASHRAE eLearning**

---

In light of coronavirus concerns and the impact the pandemic is having on travel, [ASHRAE eLearning](#), a 100% web-based training allowing you to learn at your own pace and when convenient, can be a valuable resource. Courses can be accessed anywhere, anytime, and from any computer with an internet connection. Courses contain interactive exercises that enable you to engage and retain what you have learned. [Learn more.](#)

Offerings include these popular course packages:

- Fundamentals: HVAC Systems
- HVAC Control Systems
- System Essentials
- DDC Controls

- Standard 62.1: Ventilation for Acceptable Indoor Air Quality
- Standard 90.1: Energy Standard for Buildings
- Standard 189.1-2011 - High Performing Green Buildings
- Loads and Modeling

Recently Updated:

- Introduction to HVAC Design (1.5 PDHs)
- Refrigeration System Parameters and Key Performance Indicators (KPIs) (1.0 PDH)

Once enrolled, you have 12 months to complete your training.

#### Why ASHRAE eLearning?

- Convenient way to learn about new applications and standards
- Easy way to keep up with license and certification requirements
- Approved by AIA and GBCI
- Earn PDHs/CEUs
- Courses created by industry leaders in HVAC&R

For the complete eLearning catalog, please visit <https://elearning.ashrae.org/>.

Individuals can register online at <https://elearning.ashrae.org/> and immediately gain access. Companies can register employees by contacting [elearning@ashrae.org](mailto:elearning@ashrae.org) or calling 678-500-3917.

[ASHRAE eLearning](#) is an approved Continuing Education provider for the American Institute of Architects (AIA), and a U.S. Green Building Council (USGBC) Education Partner. Continuing Education (CE) hours earned from ASHRAE eLearning may be applied toward maintenance of state-licensed professionals (architects and professional engineers) and LEED credentials.

Thank you,

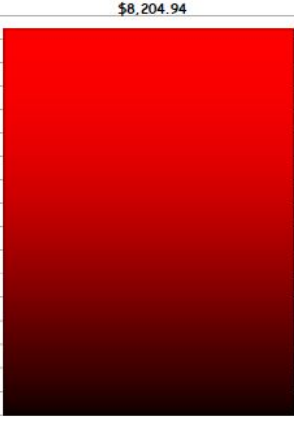
ASHRAE eLearning

---

**Research Promotion**

Go to <http://ashraerp.com> to donate online. Please contribute all donations to the Endowed Research via ASHRAE Foundation.

Individual Investors HR = Honor Roll participants \$150 min		41.0% OF GOAL    \$11,795.06 -TO GO!	Company Investors HR = Honor Roll participants \$500 min	
Ronald A Engelhardt	HR		Miller Mechanical Specialties, Inc.	
Curtis J Klaassen	HR	\$20,000	Millennium Technology of Iowa	
Luke Miller	HR	\$19,500	Iowa ASHRAE Chapter	
Fred Miller	HR	\$19,000		
Adam Puls	HR	\$18,500		
Tjaden Ahrens	HR	\$18,000		
Nick Seymour	HR	\$17,500		
Peter Erzen	HR	\$17,000		
Tyson Scheidecker	HR	\$16,500		
David Poetting	HR	\$16,000		
Ted Gerber	HR	\$15,500		
Matt Jesson		\$15,000		
Matt Gumm		\$14,500		
Richard Kapustka	HR	\$14,000		
Daniel Zaug	HR	\$13,500		
Paul Melton		\$13,000		
Jacob Larson		\$12,500		
		\$12,000		
		\$11,500		
		\$11,000		
		\$10,500		
		\$10,000		
		\$9,500		
		\$9,000		
		\$8,500		
		\$8,000		
		\$7,500		
		\$7,000		
		\$6,500		
		\$6,000		
		\$5,500		
		\$5,000		
		\$4,500		
		\$4,000		
		\$3,500		
		\$3,000		
		\$2,500		
		\$2,000		
		\$1,500		
		\$1,000		
		\$500		
		\$0		



Please consider donating to Research Promotion (RP). With the new year, we have a new goal. Any donation is helpful and appreciated. This year the Honor Roll levels are set at \$150 minimum for individuals and \$500 minimum for company investors. If you have any specific questions about how your donated money will be used, [please contact Tjaden Ahrens](#).

This year, the BOG is encouraging you to donate online in an effort to save paper and increase the efficiency of the RP donation process. Please visit the ASHRAE RP Donation page [here](#). ASHRAE provides options for you to determine where to place your donation. The Iowa Chapter is looking to increase its endowment and would appreciate it if you would place your donation in the box available next to "Endowed Research via ASHRAE Foundation", check the box indicated that you understand that those funds are restricted for the support of ASHRAE Research, and put "Iowa Chapter" in the "Existing Fund Name (If known):" box. From there it's as simple as any other online purchase with a credit card.

Don't forget that ASHRAE is a 501(c)(3) organization. Contributions are deductible as allowed by law. A receipt will be sent to the address listed above.

If you would still prefer to donate by check or have any further questions about the donation process, [please contact Tjaden Ahrens](#).

**Thank you for your donation!**

## ASHRAE Society News

### Industry News

[Turbomachine Expander Offers Efficiency, Safety for Heating, Cooling](#)

Purdue University researchers developed a device to decrease energy consumption of the vapor-compression heat pump cycle, which is commonly used in homes,

### [Astronauts Replace Coolant Pumps on International Space Station](#)

Two astronauts spent more than six hours installing replacement coolant pumps during a spacewalk on Monday. The astronauts attached the 350-lb (159 kg) pump module to the 6.8 metric ton Alpha Magnetic Spectrometer (AMS), plugged in power and data cables and spliced together eight existing coolant lines. The AMS was not designed to be serviced in orbit, so connecting the coolant lines while working in pressurized spacesuits was especially challenging. [Read more](#)

### [MIT Creates System that Cools Without Using Electricity](#)

A new system provides cooling with no electricity by using the process of radiative cooling. The device, which has no moving parts, uses an aerogel insulation that blocks and reflects visible rays of sunlight. The system can keep fruits and vegetables from spoiling and can help double the time the produce remains fresh in remote places where reliable power for refrigeration is not available. [Read more](#)

### [Thermal Comfort Model Measures Body Shape With Sensors](#)

A team at Carnegie Mellon University has created the first model that combines environmental information with data on an individual's body shape to determine thermal comfort. Information is aggregated to find the temperature that the most occupants possible will find comfortable. The system estimates body shape information from depth-imaging sensors, which are less privacy-invasive than approaches such as cameras. [Read more](#)

### [Water Battery Powers Air-Conditioning Systems](#)

A three-story "water battery" is producing enough energy to power a university's air-conditioning systems, which is reducing its reliance on the grid by more than 40%. The water battery is a thermal energy storage system that uses energy generated by a 2.1-megawatt photovoltaic system to cool 4.5 megaliters of water resting inside a three-story tank. The campus' air-conditioning systems use the cooled water. [Read more](#)

## ASHRAE Learning Opportunities



### Advance your Career with ASHRAE Certifications

ASHRAE offers 7 certification programs that demonstrates a design professional's knowledge and skills in a practice area. The certifications allow you to stand out to potential clients and enhance your reputation.

#### Certifications offered:

- Certified HVAC Designer (CHD)
- High-Performance Building Design Professional (HBDP)
- Building Energy Modeling Professional (BEMP)
- Building Commissioning Professional (BCxP)
- Healthcare Facility Design Professional (HFDP)
- Building Energy Assessment Professional (BEAP)
- Operations & Performance Management Professional (OPMP)

Learn more at: <https://www.ashrae.org/professional-development/ashrae-certification>

## Newsletter Sponsors

Sponsoring our monthly newsletter is a great way to advertise your business and support your Iowa ASHRAE Chapter. Please consider sponsoring for the 2020-2021 society year. Renewing and new sponsors need to send in payment immediately for inclusion in next month's newsletter. Please make checks payable to: ASHRAE Iowa or see the link below. The cost is \$125. Get your sponsorship in to get your logo below!

[https://ashraeiowa.org/?espresso\\_events=2020-21-newsletter-sponsorship](https://ashraeiowa.org/?espresso_events=2020-21-newsletter-sponsorship)

#### Send payment to:

Peter Emzen  
ASHRAE Newsletter Sponsorship  
P.O. Box 3686  
Urbandale, IA 50323

**HART - HAMMER, INC.**







Phone (515) 277-6305  
 Fax (515) 277-3069  
 529 Elm St • PO Box 65517  
 West Des Moines, IA 50265  
[www.harhammer.com](http://www.harhammer.com)  
[info@harhammer.com](mailto:info@harhammer.com)

**WOODMAN**  
 CONTROLS COMPANY  
*Iowa's Intelligent Building Solution*

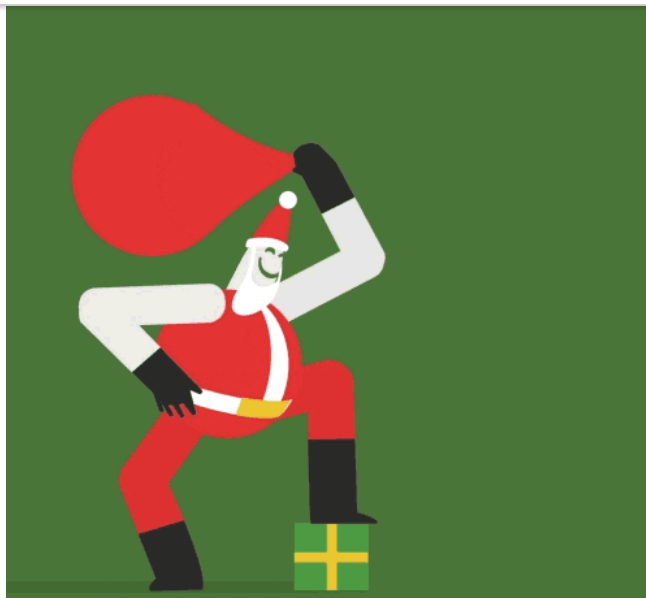
**MACK  
 CCLAIN  
 ASSOCIATES**



**SETPOINT**  
 MECHANICAL SOLUTIONS

Ted Gerber is collecting cards for the sponsors. If you've paid and don't see your card here or would like to revise the card shown, send a card-sized PNG or JPEG file to: [tgerber@dptgroup.com](mailto:tgerber@dptgroup.com).





Copyright © 2020 ASHRAE Iowa, All rights reserved.

Want to change how you receive these emails?  
You can [update your preferences](#) or [unsubscribe from this list](#).

