



Iowa Stalks Monthly Newsletter - October 2018

This Month at ASHRAE Iowa

2018 October Chapter Meeting

When

Wednesday October 17, 2018

Dinner Meeting

5:00 – Social

6:00 – Dinner

6:20 – Business Update, RP & MP
Talk

6:45 – Presentation

7:30 – Questions & Answers

Location

Ramada Tropics Conference Center
5000 Merle Hay Rd, Des Moines, IA
50322

Program

Building Loads and Dedicated
Outdoor Air Systems

Presenter

DL Daniel Int-Hout, III

As we learn more about actual interior loads, and how occupants respond to very low air supply rates with overhead well mixed air systems, we can begin to implement new technologies in the delivery of uncoupled Outside air systems.

ASHRAE research project 1515 discovered that interior loads are approaching minimum ventilation rates. It also measured high occupant comfort at less than 0.3 cfm/sf. We will discuss the opportunities this data has presented to the building designer.

Mr. Dan Int-Hout, Chief Engineer, Krueger, is responsible for the presentation of technical data and advanced application engineering for the Grilles, Registers and Diffusers,

Cost

Free for ASHRAE Iowa members
\$20 for non-members
Always free for students

as well as the VAV air terminals,
produced by Krueger.

Social Sponsor

Data Power Technology

Please [register](#) online if you are
attending.

President's Corner

Happy October!

Our new chapter year kicked off last month at the Legacy Golf Club for our annual Fall Frolic golf outing. As usual our golf committee did a fantastic job of picking a perfect day! Thank you to everyone who came out and all of our sponsors for helping us raise funds towards Research Promotion (RP).

This month's meeting will be on October 17 at the Ramada Inn on Merle Hay Road. Daniel Int-Hout, III, Chief Engineer at Krueger, will give a presentation titled "Building Loads and Dedicated Outdoor Air Systems". Daniel is an ASHRAE DL, so we are privileged to have him visit our chapter. Come on out for an interesting topic and a PDH! October is also Membership Promotion and Research Promotion Night! Research Promotion funds a lot of what ASHRAE provides its members, so come out and support our local membership and learn about what and where your donations to RP go.

ASHRAE Iowa Chapter

www.ashraeiowa.org

- Board of Governors -

Tjaden Ahrens
Matt Jesson
Matt Peters
Sara Schmerbach

- Officers -

President
Brian Steffens
President Elect
David Poetting
Treasurer
Adam Puls
Secretary
Tyson Scheidecker

- Committee Chairs –

Attendance
Dan Zaug
Auditing
Joe Moench

In November, we will have our annual student meeting up in Ames. Dinner will be at Olde Main and we will be handing out scholarships to well-deserving students. After dinner we'll head onto campus and tour the recently renovated Marston Hall.

Our BOG is hard at work planning some more technical presentations for the later part of our year so stay tuned for additional details as they develop.

Hope you can make it out!

Brian Steffens (bsteffens@shive-hattery.com)
Iowa Chapter President 2018-2019

CTTC

Matt O'Banion

Peter Erzen

eCommittee

Jason Kems

Chris Clausen

Education

Kit Cartwright

Matt Gumm

GAC

Matt Swenka

Historian

Luke Miller

Honors & Awards

Andrew Pospisal

Membership

Tim Conrad

Product Directory

Holly Elbert

Refrigeration

Justin Barrett

Research Promotion

Michael Gustafson

Ted Gerber

Student Activities

Mike Wolfe

Joe Nielsen

TEGA

Dan Ponxs

Emmett Konrad

YEA

Heidi Turner

AG Fleckenstein

Past Presidents

Luke Miller 2017-2018
Andrew Pospisal 2016-2017
Matt Gumm 2015-2016
Justin Barrett 2014-2015
Tim Conrad 2013-2014
Matt Jesson 2012-2013
Kelly Crow 2011-2012
Holly Elbert 2010-2011
Roger Leshner 2009-2010
Kit Cartwright 2008-2009
Jerrod Sieverding 2007-2008
Jason Kems 2006-2007
Chuck Heldenbrand 2005-2006
Jeff Gross 2004-2005
Ron Engelhardt 2003-2004
Dan Zaug 2002-2003
Susan Oltrogge 2001-2002
Christopher Nelson 2000-2001
Donald Swanson 1999-2000
Edward Truslow 1998-1999
James Hall 1997-1998
Robbin Vannoy 1996-1997
Mark Conway 1995-1996
Paul Melton 1994-1995
Gregory Maxwell 1993-1994
Jeffery Hammer 1992-1993
Jack Culp 1991-1992
James Lee 1990-1991
Clint Leonard 1989-1990
Charles Pedersen 1988-1989
Gary Reynolds 1987-1988
Dennis Hogan 1986-1987
Eugene Zefron 1985-1986
Donald Hagge 1984-1985
Robert Rist 1983-1984
Joseph Proctor 1982-1983
Mark Allen 1981-1982
Curtis Klaassen 1980-1981
Gerald Anderson 1979-1980

Verne Stewart 1976-1977
Curtis Hammer 1975-1976
Ralph Schilling 1974-1975
Donald Bonicamp 1973-1974
Kent Mosher 1972-1973
Thomas Van Hon 1971-1972
Robert McBride 1970-1971
William Whitman 1969-1970
Einar Dahl 1968-1969
Eugene O'Neil 1967-1968
James Green 1966-1967
Neil Hanson 1965-1966
Bob Flanagan 1964-1965
Lyndon Kelley 1963-1964
Elwood Giberson 1962-1963
Vern Polly 1961-1962
John Bain 1960-1961
Crom Campbell 1959-1960
R.T. Howard 1958-1959
W.A. Schworm 1957-1958
D.E. Schroeder 1956-1957
G.J. Kraai 1955-1956
W.E. Nanes 1954-1955
J.F. Sandfort 1953-1954
R.H. Schnell 1952-1953
C.H. McGuinness 1951-1952
R.S. Stover 1950-1951
D.E. Wells 1949-1950
D.C. Murphy 1948-1949
C.A. Wheele 1947-1948
E.O. Olson 1946-1947
B.E. Landes 1945-1946
W.W. Stuart 1944-1945
C.W. Helstrom 1943-1944
P.E. Triggs 1942-1943
Perry LaRue 1941-1942
R.A. Norman 1940-1941
Tracy Johnson 1939-1940
W.R. White 1938-1939

Upcoming Meetings

Mark your calendars! The chapter is working hard to put on a great set of events this year and we hope to see you there.

Iowa Chapter Future Meetings

Month	Date	Location	Topic
September	12	The Legacy Golf Club	Fall Frolic Golf Outing
October	17	Ramada Tropics	Membership & RP Night
November	14	Ames	Student Night & Tour
December	12	Holiday Inn	SMCI / CSI Joint Meeting
January	17*	TBD	TBD
February	15*	Hotel Renovo	Refrigeration Meeting
March	28*	TBD	MP, RP, & History Project
April	18*	Val Lanes	Chapter Meeting and Bowling Tournament
April	19*	At Your Desk!	ASHRAE Webcast
May	14*	TBD	Spring Fling Golf Outing

Society & Region Events

Month	Date	Location	Topic
January	12-16	Atlanta, GA	2019 Winter Conference
May	2-4	Milwaukee, WI	Region VI CRC
June	22-26	Kansas City, MO	2019 Annual Conference

*Tentative dates

What's New in the Iowa Chapter?

A new year brings a new Board of Governors with some returning faces and some

fresh faces.



Young Engineers in ASHRAE (YEA)



Mark your calendars for November 2nd as the Fall YEA event will be held at the new Smash Park in West Des Moines. Be on the look out for an e-mail on the signup details.

Young Engineers in ASHRAE is a program to help identify, create and support activities geared towards young members that want to grow their career. [Learn more](#)

about YEA at the ASHRAE website: <https://www.ashrae.org/communities/young-engineers-in-ashrae-yea>

STEM Festival

The ASHRAE Iowa Education Committee will be exhibiting at the upcoming STEM Festival for 3rd through 8th graders at the DMACC Ankeny FFA Enrichment Center. The committee will be introducing kids and parents to HVAC through our interactive STEM Rig. The STEM Rig is a fully automated air handling unit mockup, complete with variable speed fan, movable air dampers, light bulbs for a heat source, and an interactive touchscreen user interface. The event will take place on October 22 from 6 to 8 pm.

Any members interested in volunteering at the exhibit should contact Kit Cartwright at kit.cartwright@systemworksllc.com.

DMACC Ankeny

STEM FESTIVAL

Science • Technology • Engineering • Math

MONDAY, OCTOBER 22, 6pm-8pm

DMACC ANKENY CAMPUS, FFA ENRICHMENT CENTER

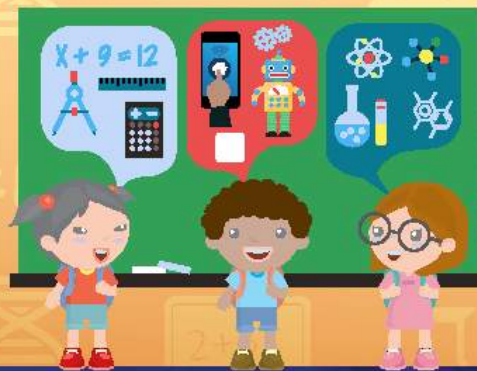
Register at scstemhub.drake.edu

FUN, FAMILY-FRIENDLY, FREE
event for 3rd-8th graders and families.

An evening of interactive STEM activities designed for students to **EXPLORE, CREATE, MAKE, and LEARN** about exciting opportunities in Science, Technology, Engineering and Math.

Questions? Contact
Amy Steenhoek
absteenhoek@dmacc.edu
or 515-965-7117

DMACC
2006 S. Ankeny Blvd.



Sponsored by
DMACC
DES MOINES AREA
COMMUNITY COLLEGE
Life's Calling™

This is not a school district publication. It is being distributed through the school district as a community service of the District to inform you of other community activities or services available.

Research Promotion

Please consider donating to RP if you haven't already. With the new year, we have a new goal. Any donation is helpful and appreciated. If you have any specific questions about how your donated money will be used, [please contact Michael Gustafson](#).

ASHRAE Iowa Research Investors 2018-2019			
Go to http://ashraerp.com to donate online. Please contribute all donations to the Endowed Research via ASHRAE Foundation.			
Individual Donations HR = Honor Roll participants \$100 min	4.5% OF GOAL \$19,100.00 -TO GO!	Company Donations HR = Honor Roll participants \$250 min	
Mr. Mark G. Conroy	\$25,000		
Mr. Roger D. Hill	\$18,500		
Mr. Brian A. Hoffmeyer	\$18,500		
Mr. Bruce A. Kuehling	\$18,500		
Mr. Lynn Miller	\$18,500		
Mr. W.C. Conroy	\$17,500		
Mr. Foundation	\$16,500		
	\$16,000		
	\$15,500		
	\$15,000		
	\$14,500		
	\$14,000		
	\$13,500		
	\$13,000		
	\$12,500		
	\$12,000		
	\$11,500		
	\$11,000		
	\$10,500		
	\$10,000		
	\$9,500		
	\$9,000		
	\$8,500		
	\$8,000		
	\$7,500		
	\$7,000		
	\$6,500		
	\$6,000		
	\$5,500		
	\$5,000		
	\$4,500		
	\$4,000		
	\$3,500		
	\$3,000		
	\$2,500		
	\$2,000		
	\$1,500		
	\$1,000		
	\$500		
	\$0		
	\$990.00		

Updated 03/13/19

This year, the BOG is encouraging you to donate online in an effort to save paper and increase the efficiency of the RP donation process. Please visit the ASHRAE RP Donation page [here](#). ASHRAE provides options for you to determine where to place your donation. The Iowa Chapter is looking to increase its endowment and would appreciate it if you would place your donation in the box available next to “Endowed Research via ASHRAE Foundation”, check the box indicated that you understand that those funds are restricted for the support of ASHRAE Research, and put “Iowa Chapter” in the “Existing Fund Name (If known):” box. From there it’s as simple as any other online purchase with a credit card.

Don’t forget that ASHRAE is a 501(c)(3) organization. Contributions are deductible as allowed by law. A receipt will be sent to the address listed above.

If you would still prefer to donate by check or have any further questions about the donation process, [please contact Michael Gustafson](#).

Thank you for your donation!

ASHRAE Society News



ASHRAE Government Affairs

Sign up for the bi-weekly Government Affairs newsletter. It is the best way to stay current with government activities that impact the HVAC&R industry and identify opportunities for you to get involved.

Link: <https://www.ashrae.org/about/government-affairs>

Industry News

Beer Maker Shines Light on Warehouse Energy Use

Budweiser Distributing uses LED lighting to improve the facility's lighting while significantly reducing monthly electricity costs. The [facility retrofitted interior lighting](#) with LED tube lighting that will shave almost 54 kilowatts from the facility's electricity demand, and reduce annual electricity usage by more than 250,000 kilowatt-hours, which is equivalent to a month's electricity consumption of 250 typical homes in the region. An *ASHRAE Journal* article from July 2017 explores a renovation of a long-vacant 1950s railway warehouse and how engineers [mitigated significant energy loads](#) to design an energy-efficient building.

Offices Test Innovations to Become Healthier Buildings

One of the most difficult challenges for adopting emerging technologies in commercial real estate is justifying the cost of implementing such measures. A report released in July makes a case for [physical design and healthy practices of workplace environments](#) having a positive impact on a company's bottom line. The report provides research data from recent health and wellness impact studies and profiles early adopters of healthy building and workplace design and management practices. An *ASHRAE Journal* article from September 2013 discusses [a study that monitored and commissioned daylighting control systems](#) and tips for execution, set up and commissioning of the systems.

Untapped Efficiencies Yield Savings in Food Service

Focusing on sustainability, such as water and energy use, in the food service industry could reduce spending by 20-30%. [Strategies such as installing efficient stove burners](#), replacing steam heaters at the buffet with induction technology and actively monitoring equipment performance and energy use are a few strategies the food service industry can use to yield energy savings. An article from the April 2011 *ASHRAE Journal* addresses [issues to consider when specifying meters and submeters](#), which could be an energy saving solution for restaurant and foodservice applications.

Microgrid Uses Multiple Battery-Based Energy Storage Services, Powers 100% of Military Base Electricity Needs

A microgrid at an Air National Guard Base in Massachusetts is expected to achieve [several firsts in microgrid development](#) for the military and New England. It could be the first time a microgrid integrates enough wind power and batteries to meet 100% of the electricity needs at a military base or defense facility in the U.S. and the first microgrid to leverage a battery-based energy storage system to form a base-wide microgrid completely independent from any utility grid or other external power provider. It includes a 1.5-MW wind turbine and a 1.6-MW diesel back-up generator. The [energy storage and management system](#) will demonstrate the economics of stacking multiple, battery-based energy storage services, while the controller will optimize on-site energy for maximum efficiency.

ASHRAE Learning Institute

Check out ASHRAE eLearning for more than 90 courses available on your computer. These courses have been created by HVAC&R professionals using ASHRAE's extensive pool of knowledge and most courses are recognized PDHs by AIA and GBCI (confirm with licensing body for specifics). Course options include:

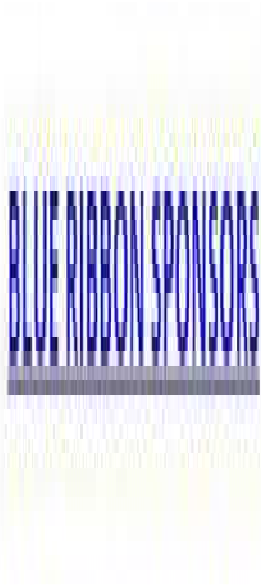
- Introduction to Refrigerants
- Refrigerant Selection
- Refrigerant Management
- Ethics for the Built Environment Professional Engineer
- Standard 62.1-2013: Natural Ventilation Procedure
- Using Standard 90.1-2010 to Meet LEED Requirements
- Building Information Modeling
- Humidity Control Design: Basic Principles, Loads and Equipment
- Standard 189.1 for High-Performance Green Buildings - Energy Efficiency
- School of Hard Knocks: Controlling Moisture & Humidity in Buildings

[Click Here for More Details](#)

CRC Sponsors

GRAND CHAMPION SPONSORS





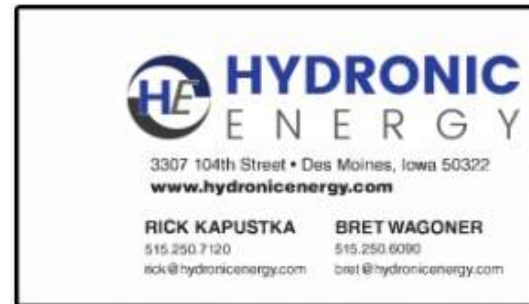
RED RIBBON SPONSORS



YELLOW RIBBON SPONSORS



Newsletter Sponsors





INNOVATIVE HVAC SOLUTIONS

1454 30th Street, Suite #207
West Des Moines IA 50266

Ph 515-223-6048
Fax 515-223-7269
info@milltechvac.com

www.milltechvac.com

Mid-America Sales Group, Inc.

Manufacturers Representatives



Des Moines, Iowa
P.O. Box 1613 • 50305
510 Murphy St. • 50309
www.MMSincOnline.com

J. Craig Miller

PRESIDENT

EMAIL - cmiller@mmsinonline.com

office 515.243.4287 • cell 515.249.1859 • fax 515.243.7313

SPECIALISTS IN MEASUREMENT & CONTROL EQUIPMENT FOR INDUSTRY SINCE 1952



Halvorson Trane

Building Comfort Solutions



PRODUCTS INCORPORATED

www.products-inc.com

1429 2nd Ave
Des Moines, IA 50314

PHONE (515)288-5838
(800)466-5738
FAX (515)288-2574



Rist & Associates
MANUFACTURERS REPRESENTATIVES



Phone: (515) 243-8720
FAX: (515) 243-8714
www.ristandassociates.com

4 Washington Ave.
P.O. Box 1807
Des Moines, Iowa 50305



- HVAC System Test and Balance - Air & Water Balancing -
HVAC System Commissioning

925 S.E. Olson Drive
Waukee, IA 50263

Phone 515-987-2825
Fax 515-987-5036

www.hvactab.com

James E. Hall, P.E.
jimh@hvactab.com

Matt Jesson
mattj@hvactab.com



WOODMAN CONTROLS

515-964-0904
www.woodmaninc.com



We are hiring!





Sponsoring our monthly newsletter is a great way to advertise your business and support your Iowa ASHRAE Chapter. Please consider sponsoring for the 2018-2019 society year. Renewing and new sponsors need to send in payment immediately for inclusion in next month's newsletter. Please make checks payable to: ASHRAE Iowa. The cost is \$125.

Send payment to:

Adam Puls
ASHRAE Newsletter Sponsorship
P.O. Box 3686
Urbandale, IA 50323

Tyson Scheidecker is collecting cards for the sponsors. If you've paid and don't see your card here or would like to revise the card shown, send a card-sized PNG or JPEG file to: tyson@shive-hattery.com.



2018 Fall Frolic Winners
