



# Bankers Life Building

ASHRAE Central Iowa Chapter History Report 2017

This page shows the copper covered cooling tower pit hidden behind a louver on the roof



Contents

Overview ..... 3

    History ..... 3

Envelope ..... 4

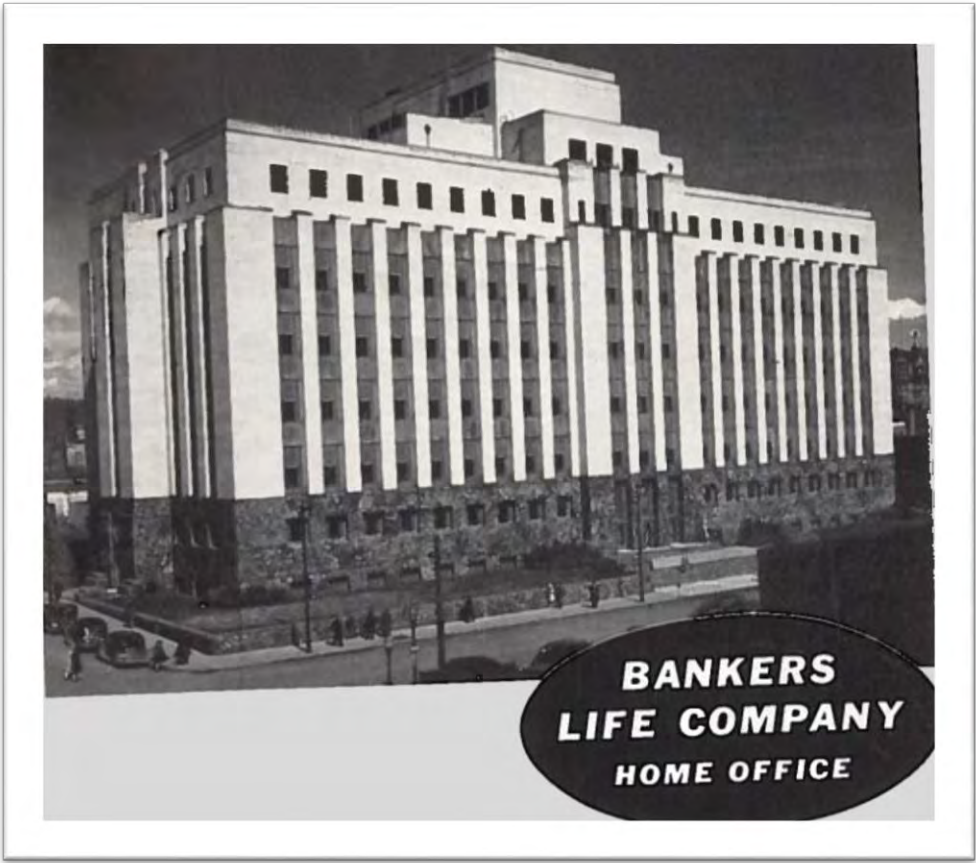
    Windows ..... 4

    New Skylight ..... 4

    Exterior..... 6

Interior ..... 9

Mechanical Systems..... 10

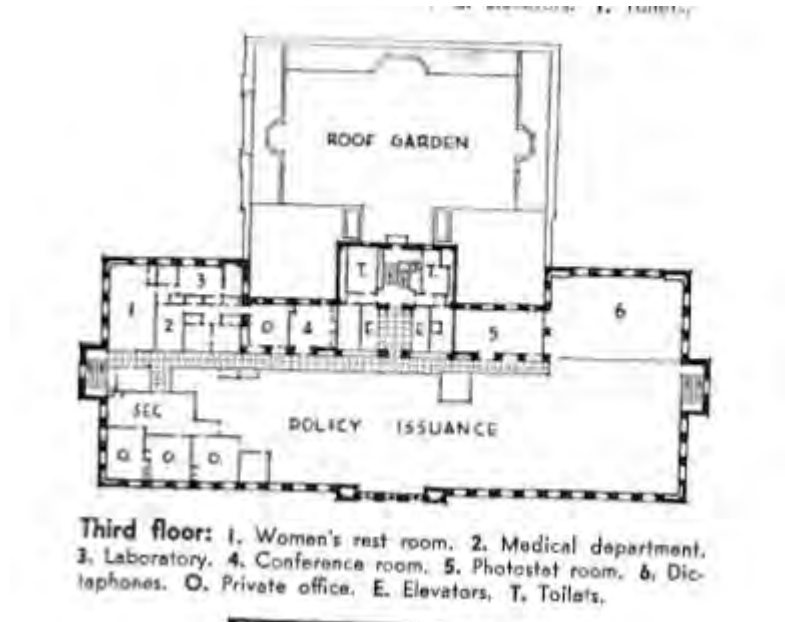


## Overview

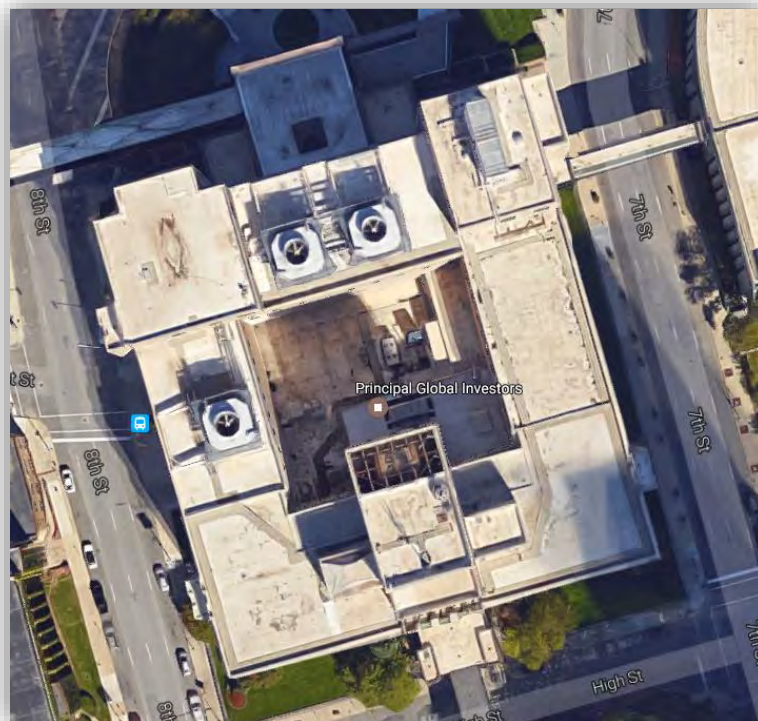
### History

- '39 original building completed

- '59 east addition
- '76 northwest addition
- '84 north pavilion
- CHW retrofit in the '90s



- 2017 occupancy of complete renovation



## Envelope

### Windows

- Flower City in Minneapolis made Original Bronze framed double pane windows, these are 28% better than 2010 energy code. These are in use today.



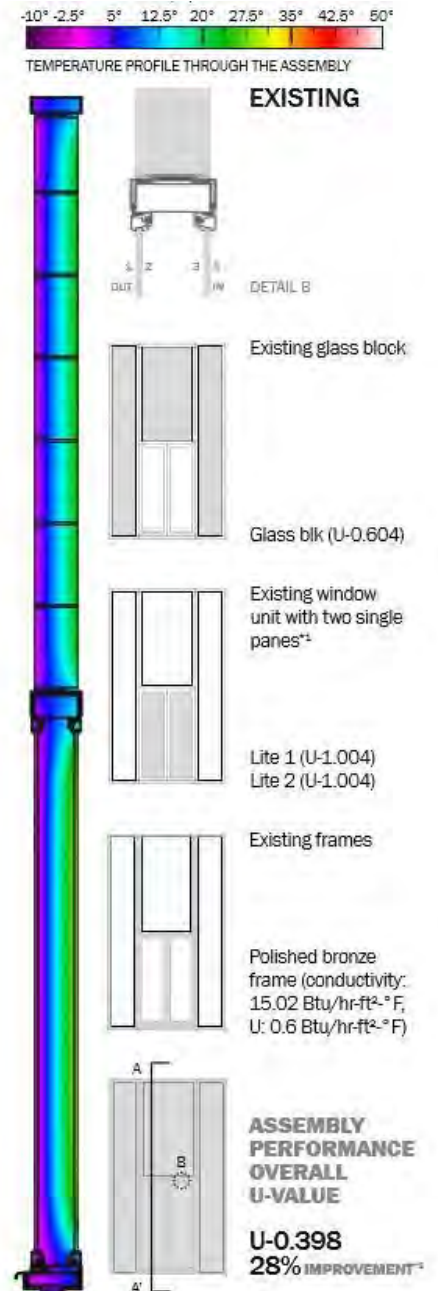
HERE IS AN outstanding example of how PC Architectural Glass may be used for sculptured glass murals of distinction. These panels add beauty and interest to the entrance of the new Banker's Life Company Building in Des Moines, Iowa. Architects . . . Tinsley, Melbourn and Higgins.

MANY architects and designers have deplored the fact that they cannot actually model in glass. But today, they can do almost as well—they can produce murals of the same striking originality and delicacy by having their own modeling in clay or plaster faithfully reproduced in exquisite glass.

MANY architects and designers have deplored the fact that they cannot actually model in glass. But today, they can do almost as well—they can produce murals of the same striking originality and delicacy by having their own modeling in clay or plaster faithfully reproduced in exquisite glass.

At the New York World's Fair, visit the Glass Center Building and the Pittsburgh House of Glass

"PITTSBURGH" stands for Quality Glass





## New Skylight

- New atrium uses sage glass in skylight. Skylight changes tint on a day/seasonal schedule. Photocells reset schedule to lighten tint during overcast conditions



## Exterior

- Exterior is stone with bronze windows and glass block surround. Materials picked originally for low maintenance costs.

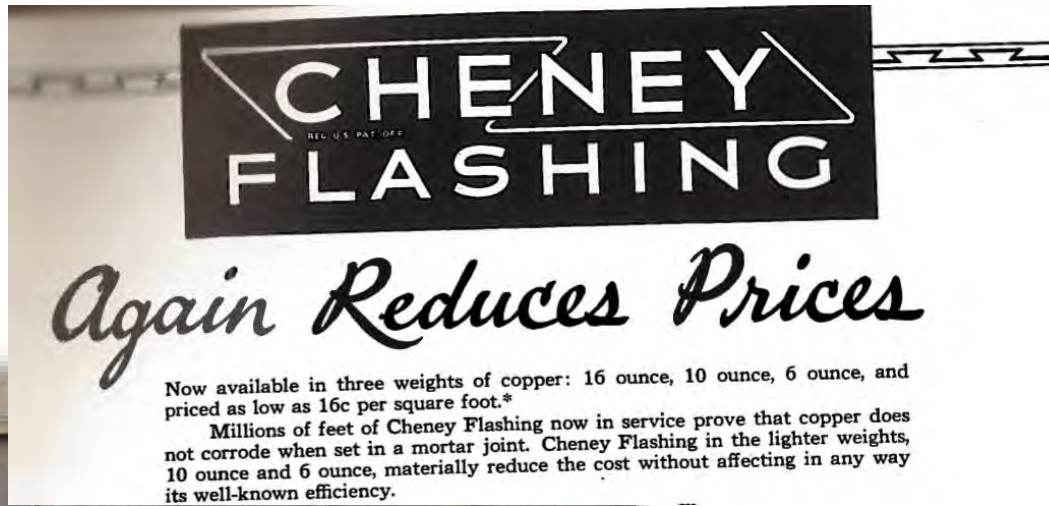


- Cold Springs Minnesota quarry still in business used for matched new rainbow granite for new columns





- Cooling Tower pit was entirely sheeted in copper cladding (2016 pic on cover page)



**CHENEY FLASHING**  
REG. U.S. PAT. OFF.

*Again Reduces Prices*

Now available in three weights of copper: 16 ounce, 10 ounce, 6 ounce, and priced as low as 16c per square foot.\*

Millions of feet of Cheney Flashing now in service prove that copper does not corrode when set in a mortar joint. Cheney Flashing in the lighter weights, 10 ounce and 6 ounce, materially reduce the cost without affecting in any way its well-known efficiency.



- 2017 project re-used 2-3" cork insulation of original exterior wall construction. R-value for the 2" cork is 7.14. R-value overall is 11.4.





## Interior

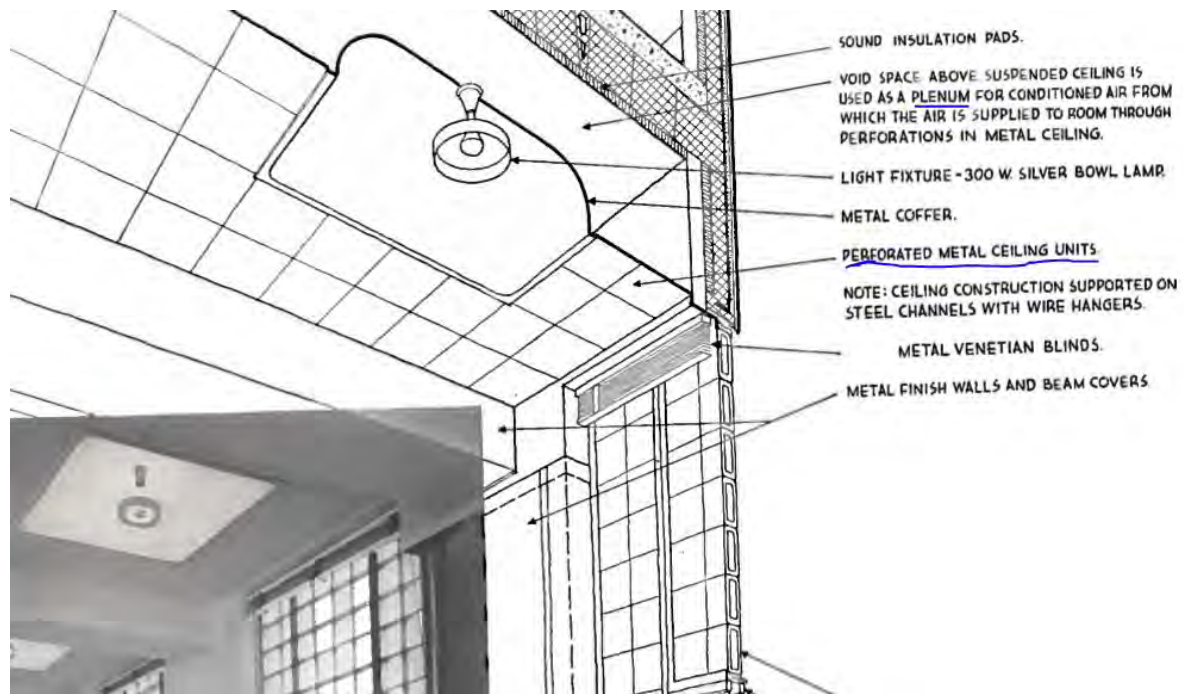
- Sound Control:

**J-M Acoustical Treatment specified to eliminate unnecessary noise . . . keep efficiency high . . . in general office areas of new Bankers' Life Building**



## Mechanical Systems

- Original air distribution system filtered through ceiling



- In 2017, duct is routed between beams to keep ceiling high, mains stay in the core. Duct retrofit in late

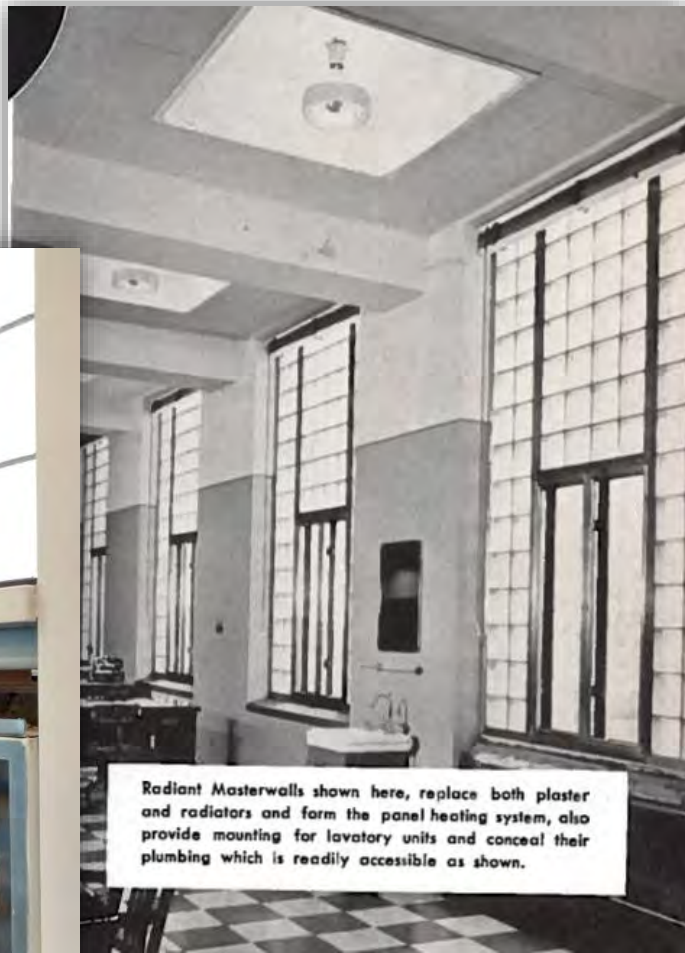


'70s or '80s lowered ceiling. Current redesign raised ceiling by 2'8.





- Originally radiant walls provided perimeter heat



- 2017 retrofit puts fin-tube under the windows



- Old chiller room will be repurposed as studio space. Newer chillers are distributed through campus.

